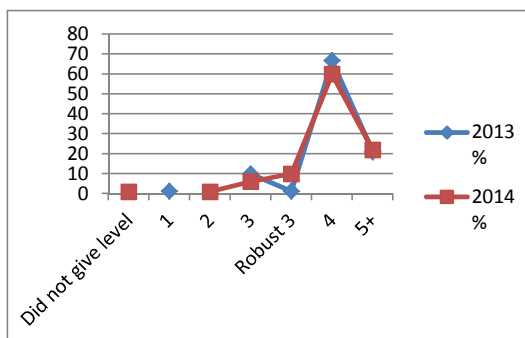


LEVELS AND LANGUAGE COHORTS FOR ARDUDWY CATCHMENT AREA

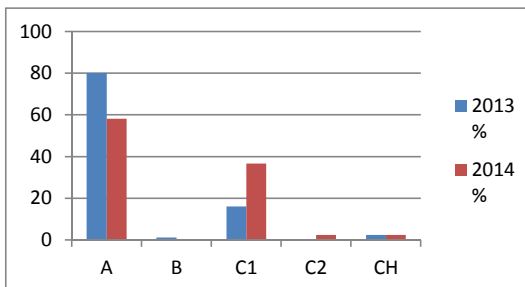
(including pupils that transfer to Secondary Schools outside catchment area)

CA2 Levels (Welsh)

Level	2013 %	2014 %
<i>Did not give level</i>		1
1	1.2	
2		1
3	9.9	6
Robust 3	1.2	10
4	66.7	60
5+	21	22
Number	81	79



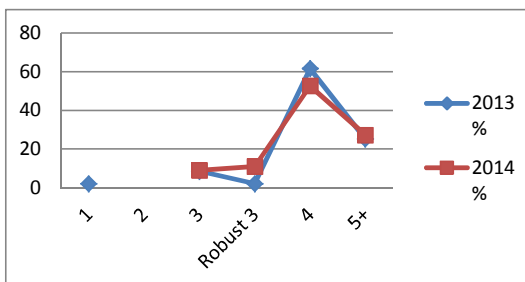
Percentage	2013 %	2014 %
A	80.2	58.2
B	1.2	
C1	16.1	36.7
C2		2.5
CH	2.5	2.5
Number	81	79



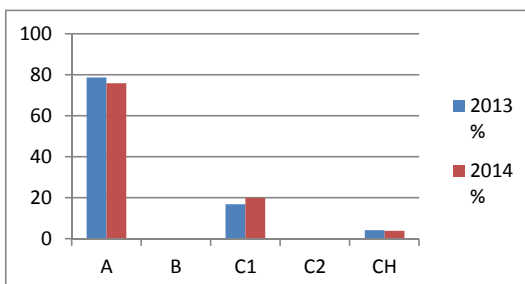
(pupils that transfer to Ardudwy School)

CA2 Levels (Welsh)

Level	2013 %	2014 %
1	2.1	
2		
3	8.6	9
Robust 3	2.1	11
4	61.7	52.7
5+	25.2	27.3
Number	47	55



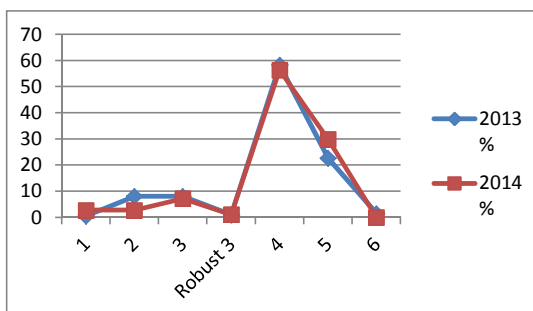
Percentage	2013 %	2014 %
A	78.7	76
B		
C1	17	20
C2		
CH	4.3	4
Number	47	55



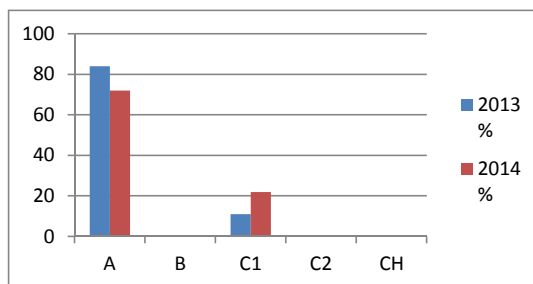
LEVELS AND LANGUAGE COHORTS BANGOR CATCHMENT AREA

CA2 Levels (Welsh)

	2013 %	2014 %
1	0.5	2.76
2	8.04	2.76
3	8.04	7.18
Robust 3	1	1.1
4	58.3	56.35
5	22.61	29.83
6	1.51	0
Number	199	181



Percentage	2013 %	2014 %
A	84	72
B		0.01
C1	11	22
C2	0.02	
CH	0.06	0.06
Number	202	181



CA2 Levels (Welsh Second Language) - Ysgol Ein Harglwyddes

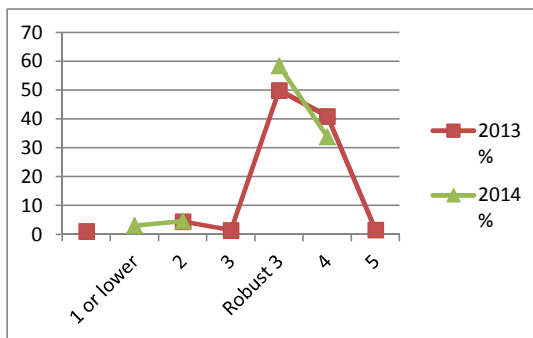
Level	2014 %
1	10.53
2	26.31
3	36.84
Robust 3	0
4	15.79
5	10.52
Number	19

Percentage	2014 %
A	
B	
C1	53
C2	11
CH	37
Number	19

LEVELS AND LANGUAGE COHORTS FOR BOTWNNOG CATCHMENT AREA

CA2 Levels (Welsh)

	2013 %	2014 %
1 or lower	1.15	
2		3.08
3	4.5	4.62
Robust 3	1.5	
4	50	58.46
5	41	33.84
6	1.6	
Number	66	65



Percentage	2013 %	2014 %
A	91.3	93.55
B		3.23
C1	6.52	
C2	2.17	1.61
CH		1.61
Number	46	62

